

PL-2303 (Chip Rev H, HX, X) USB to Serial Adapter Driver Installation Manual

For Windows 98/ME/2000/XP/Vista

Release Version 1.3 (3/5/2009)

Contents

- Introduction
- Features & Specifications
- System Requirements
- Installing the Device
- Uninstalling the Device
- Disclaimer

Introduction

The PL-2303 USB to Serial adapter is your smart and convenient accessory for connecting RS-232 serial devices to your USB-equipped Windows host computer. It provides a bridge connection with a standard DB 9-pin male serial port connector in one end and a standard Type-A USB plug connector on the other end. You simply attach the serial device onto the serial port of the cable and plug the USB connector into your PC USB port. It allows a simple and easy way of adding serial connections to your PC without having to go thru inserting a serial card and traditional port configuration.

This USB to Serial adapter is ideal for connecting modems, cellular phones, PDAs, digital cameras, card readers and other serial devices to your computer. It provides serial connections up to 1Mbps of data transfer rate. And since USB does not require any IRQ resource, more devices can be attached to the system without the previous hassles of device and resource conflicts.

Finally, the PL-2303 USB to Serial adapter is a fully USB Specification compliant device and therefore supports advanced power management such as suspend and resume operations as well as remote wakeup. The PL-2303 USB Serial cable adapter is designed to work on all Windows operating systems.

Features & Specifications

- ✓ Smart USB to RS-232 (DB 9-pin male serial port) interface
- ✓ Supports various serial devices like modems, PDAs, cellular phones, digital cameras, card readers, and more.
- ✓ Easy Plug and Play Installation
- ✓ Full Compliance with the Universal Serial Bus Specification v1.1
- ✓ Supports the standard RS-232 Serial Interface
- ✓ Supports automatic handshake mode
- ✓ Over 1Mbps data transfer rate
- ✓ Supports Remote Wake-up and Intelligent Power Management
- ✓ Provides Dual Buffers for upstream and downstream data transfer
- ✓ No IRQ resource required
- ✓ Bus Powered – no separate power supply or battery required
- ✓ Dimensions L x W x H: _____ (mm)
- ✓ Weight: ____grams (approximate)

System Requirements

- ✓ Windows 98, Windows ME, Windows 2000, Windows XP, or Windows Vista operating system
- ✓ AMD or Intel Pentium 133MHz or better based computer
- ✓ USB 1.1 or higher port
- ✓ USB to RS-232 (Serial Port) Cable Adapter
- ✓ USB to RS-232 Driver Utility Disk

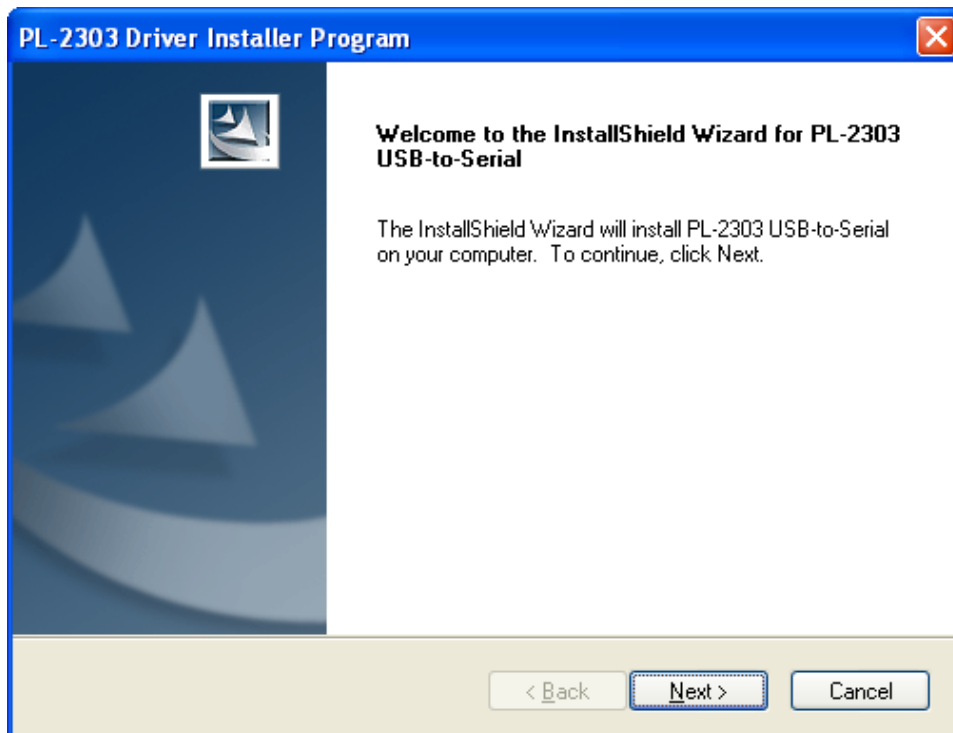
Installing the Device with InstallShield

This section will guide you on how to install the PL-2303 USB to Serial adapter under Windows Vista, Windows XP, Windows 2000, Windows ME, and Windows 98 operating systems. You can download the latest PL-2303 Driver Installer program from Prolific support website.

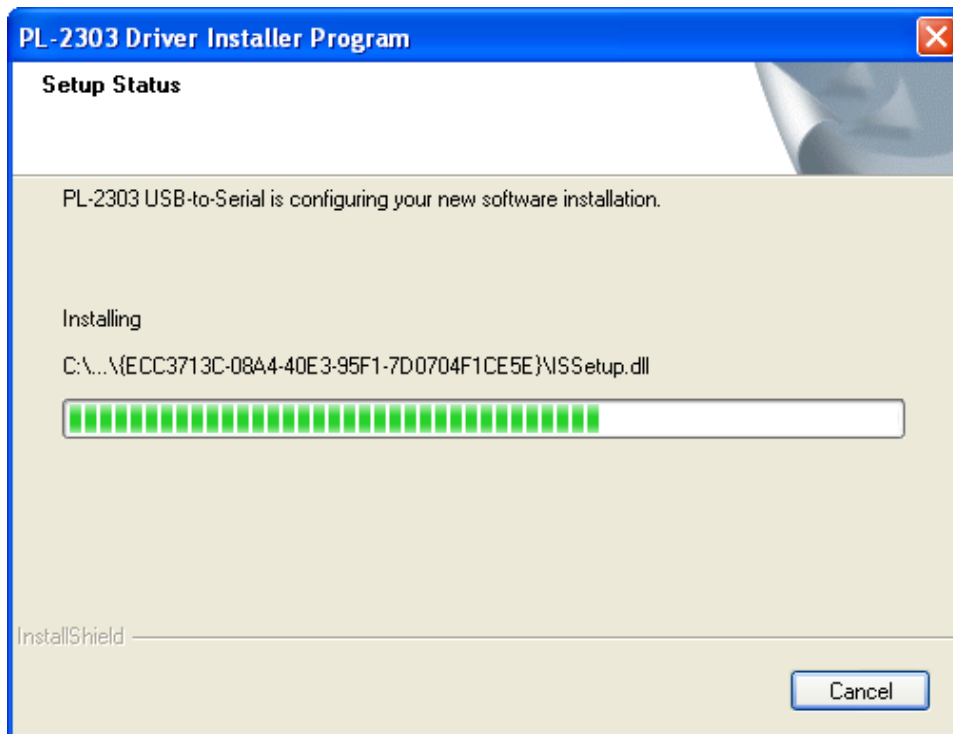
Note: Please take notice of the installation order. First, run the Driver Installer Program before plugging in the USB to Serial adapter. If you already plug the device during the driver installation, you need to replug the device again for Windows to enumerate the device and load the drivers installed.

The following steps will show how to install the device under Windows XP. Basically, the procedures for Windows XP are also somewhat the same for other Windows operating systems versions.

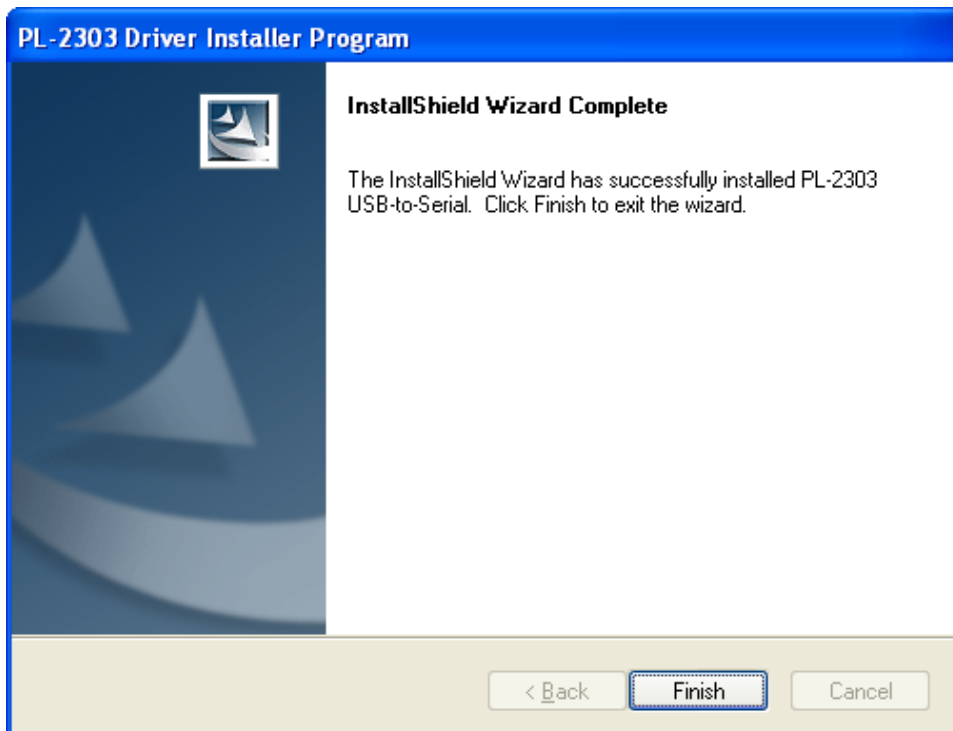
1. Power on your computer and boot to Windows.
2. Run or double-click the PL-2303 Driver Installer program. The InstallShield Wizard will be displayed on your screen to inform you that the PL-2303 driver will be installed on your computer. Click **Next** to continue and start the installation.



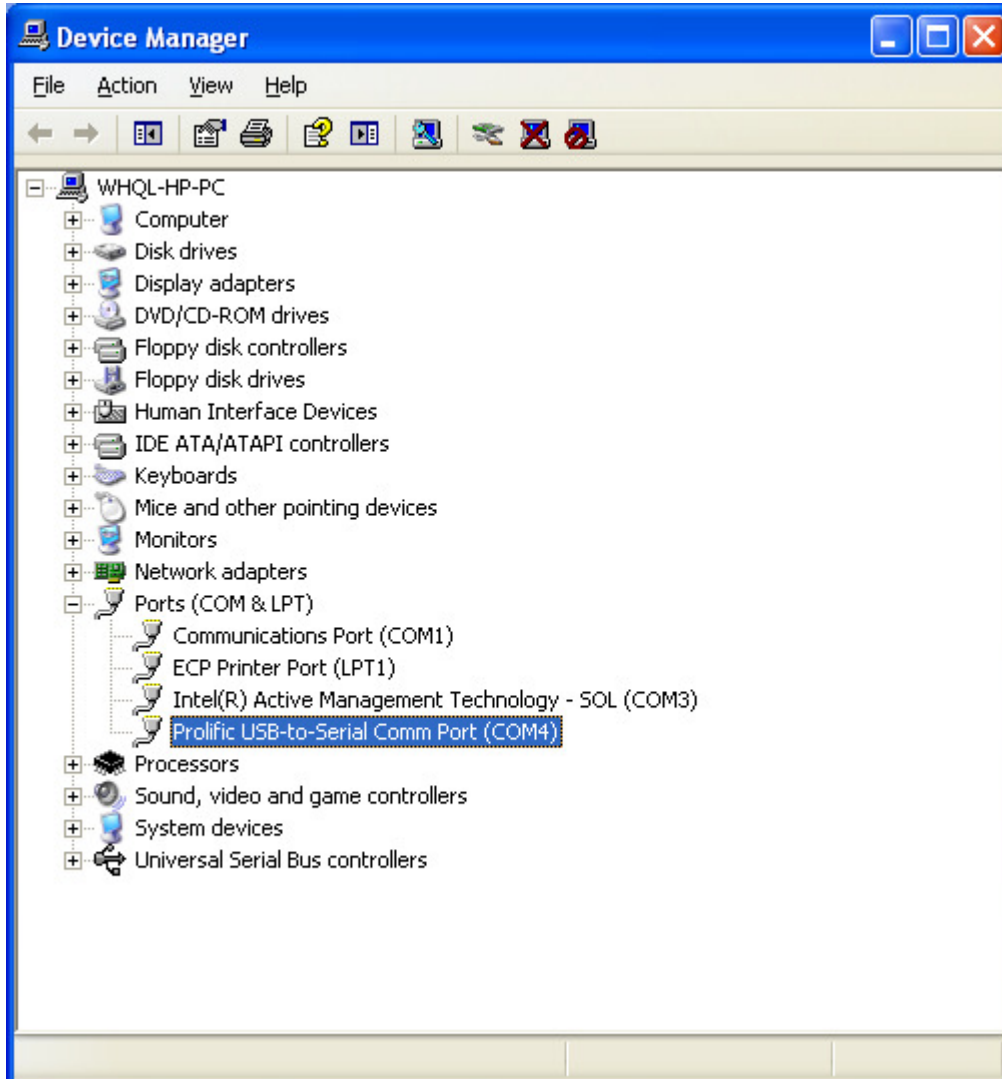
3. The PL-2303 Driver Installer program will then start to install the drivers needed.



4. Click the **Finish** button to close the InstallShield program. If you have plugged the cable into the PC while running the setup installation, please unplug and replug the cable for the system to detect the device.



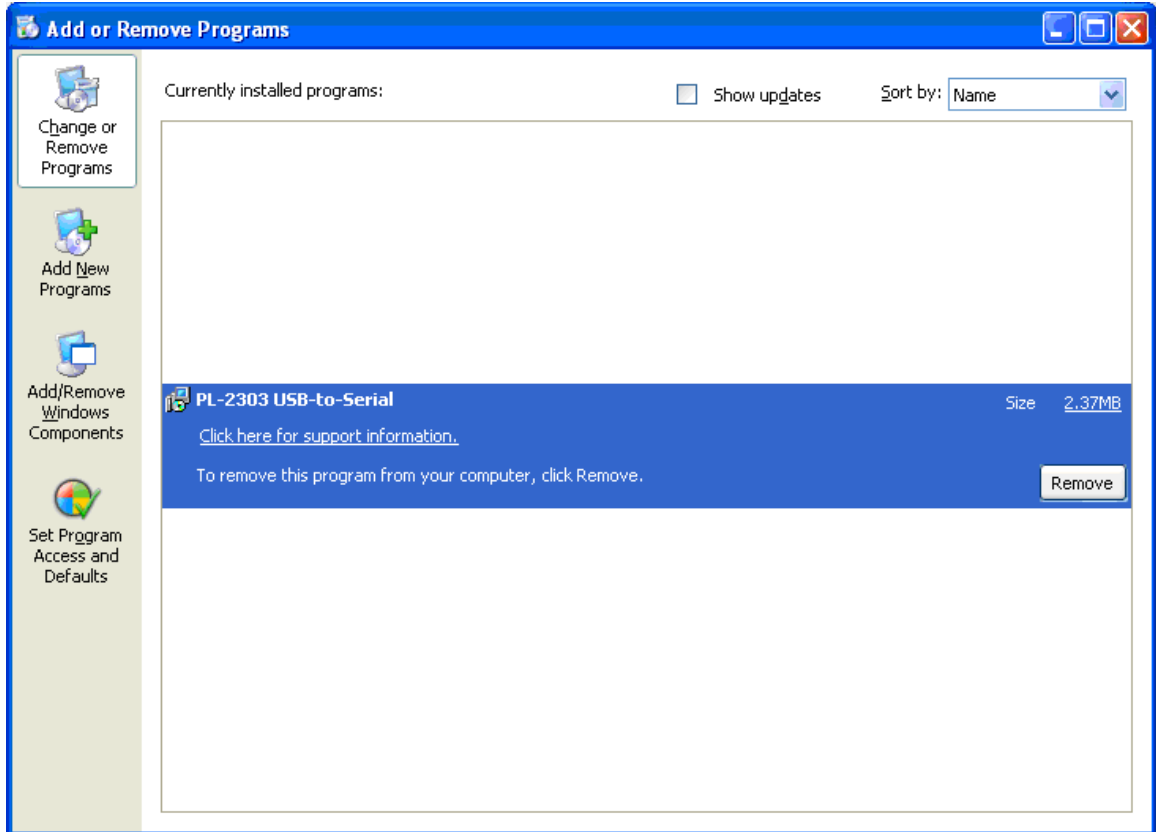
5. Locate the USB port of your computer and plug in the USB to Serial adapter. Windows should detect the driver as **Prolific USB-to-Serial Comm Port**. Except for beta drivers, most drivers released by Prolific Technology have passed Windows logo testing and logo digitally signed. You can go to Device Manager to check for the "Prolific USB-to-Serial Comm Port" device and the COM port number assigned by Windows. You can also check the driver version by right-clicking the "Prolific USB-to-Serial Comm Port" device and select Properties and Driver tab.



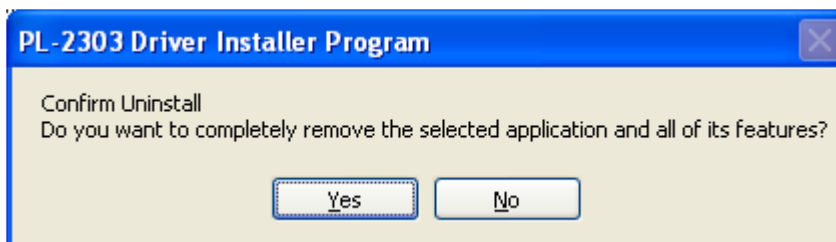
Uninstalling the Device Driver

To uninstall the PL-2303 driver, follow the below steps:

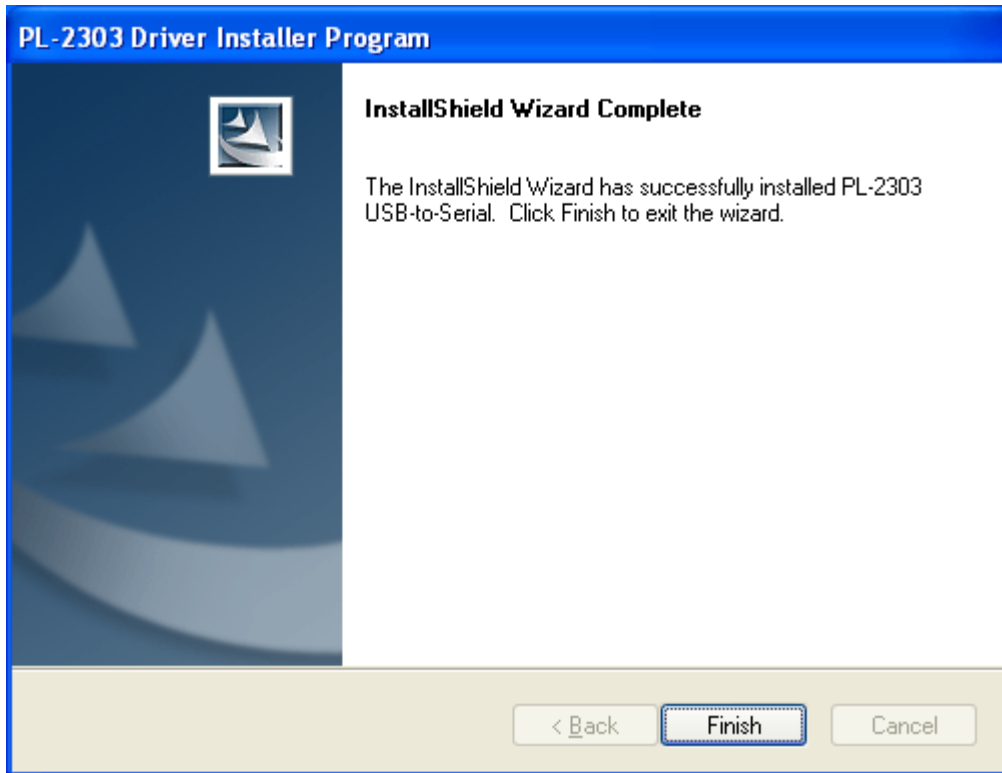
1. Click Start – Settings - Go to Control Panel – Add or Remove Programs. Look for the “PL-2303 USB-to-Serial” program and click the Remove button.



2. InstallShield Wizard will then start to run and will prompt you to confirm uninstallation. Click Yes to begin the driver uninstall.



3. Wait for the InstallShield Wizard to complete the uninstall process. When complete, click Finish to end the program. Wait for some few seconds until the "PL-2303 USB-to-Serial" program is removed from the Add or Remove Programs window.



Disclaimer

Information in this document is subject to change without notice. The manufacturer does not make any representations or warranties (implied or otherwise) regarding the accuracy and completeness of this document and shall in no event be liable for any loss of profit or any other commercial damage, including but not limited to special, incidental, consequential, or other damages.

No part of this document may be reproduced or transmitted in any form by any means without the express written permission of the manufacturer.

All brand names and product names used in this document are trademarks or registered trademarks of their respective holders.